

AGENDA

Silahkan Simak Webinarnya di
<https://webinar.doktermoez.com>

The screenshot shows a web browser displaying the registration page for a webinar. The page features logos for Kemenkes, PALAPA learning center, and DOKTER MOEZ. The main banner includes the title 'WEBINAR MENYIKAPI PENYAKIT HIV - AIDS', the date '5 SKP Kamis 24 Oktober 2024', and the target audience 'Sasaran Peserta: Semua Profesi Nakes'. A QR code and a price tag of 'Rp 35.500' are also visible. The page is marked as 'TERAKREDITASI - A' by the Indonesian Ministry of Health. A 'LIVE STREAMING' badge is prominently displayed. On the right side, there is a 'DOKTER MOEZ' sidebar with an 'Events' menu and a 'Live Chat' section that is currently inactive, displaying the message 'No ongoing stream. Chat will enable as soon as the stream starts.' A notification at the bottom of the chat area states 'The live stream has not started yet' and 'Next stream starts at Oct 24, 2024 07:55 AM'. A 'Daftar' button with a WhatsApp icon and the number '0851.98389.536' is located at the bottom left of the main banner. A dark blue button labeled 'Akses LMS Webinar' is positioned at the bottom center.

https://webinar.doktermoez.com

Kemenkes PALAPA learning center DOKTER MOEZ

TERAKREDITASI - A
Kementerian Kesehatan Republik Indonesia
Nomor HK.02.02/F/1431/2024

WEBINAR MENYIKAPI PENYAKIT HIV - AIDS
Bagi tenaga medis & kesehatan
DI FASYANKES

5 SKP Kamis
24 Oktober 2024
Sasaran Peserta:
Semua Profesi
Nakes

Rp 35.500

www.doktermoez.com #1 **LIVE STREAMING**

Daftar 0851.98389.536

Nantikan Sesuai Jadwal

Akses LMS Webinar

DOKTER MOEZ

Jadwal Terdekat Events >>

Live Chat

No ongoing stream.
Chat will enable as soon as the stream starts.

The live stream has not started yet
Next stream starts at Oct 24, 2024 07:55 AM

Enter text here..

Kisah-kisah yang Memotivasi



2024

TEMPAT PENEMUAN

Bangsas Rawat Inap

Poli Rawat Jalan

IGD / Ponek

Kondisi / Penyakit

yang sering ditemukan

1

TBC

2

Diare

3

Demam lama

4

Candidiasis Oral

5

Tidak sadar

6

Kecelakaan
Kerja

Hal-hal yang dihadapi

Tingkat Pendidikan

Sosial Budaya

Ekonomi

Jaminan Kesehatan



Macam Pasien

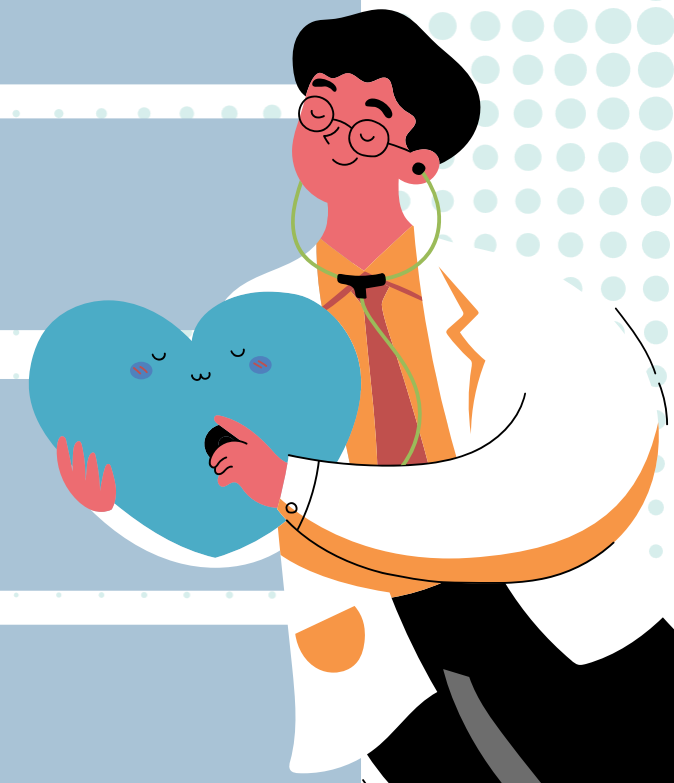
Macam Pasien

Usia Produktif yang belum menikah

Usia Produktif yang sudah menikah

Usia Tidak Produktif

Temam Sejawat



Cara Penularan

**Hubungan Seksual
yang berisiko**

Ibu Ke Anak

**Penyalahgunaan
Narkoba**





Terima Kasih
